

EQUIPMENT BOLTS

Self Drilling Anchors



Our bolting solution is intended for :

- Weakened and fragmented rock zones
- Time-saving and efficient method as drilling, grouting and anchoring in one step
- Excellent quality grouting to increase load bearing capacity and prevent corrosion
- Anchor lengths more than 4m possible

MARIBOLT®

Installation :

- Drilling borehole with Maribolt®
- Direct placement of the bolt
- Grouting the SDA by injecting through the bolt until the resin leaks from the borehole
- Pretension after grouting

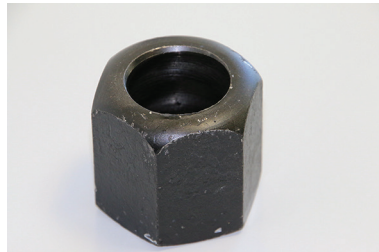


Self Drilling Anchors



Accessories

- Drill bit
- Nut
- Plate
- Coupling
- Injection adapter



www.weber-mining.com

A. WEBER S.A.S.
94, Avenue de la Paix
F-57520 ROUHLING
☎ + 33 3 87 27 27 80
📠 + 33 3 87 27 27 81